

MOHAWK

PARALLELOGRAM

75-42-F FLUSH MOUNT INSTALLATION REQUIREMENT DRAWINGS



MOHAWK RESOURCES LTD.

65 VROOMAN AVE.

AMSTERDAM, NY 12010

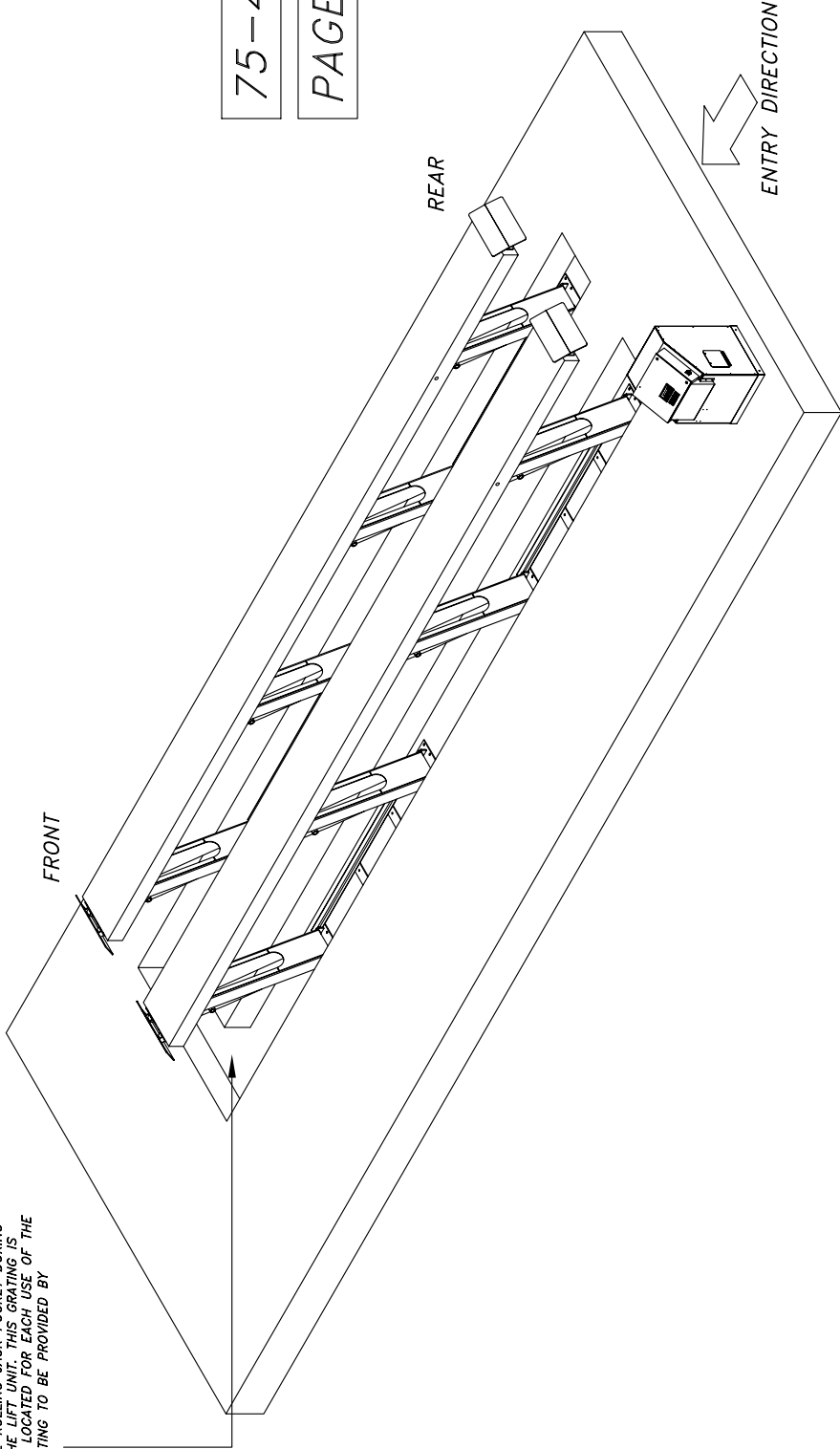
TOLL FREE: 1-800-833-2006

LOCAL: 1-518-842-1431

FAX: 1-518-842-1289

INTERNET: WWW.MOHAWKLIFTS.COM

GRATING IS RECOMMENDED TO BE USED TO COVER THE ROLLING JACK POCKET DURING USE OF THE LIFT UNIT. THIS GRATING IS MANUALLY LOCATED FOR EACH USE OF THE LIFT. (GRATING TO BE PROVIDED BY OTHERS)



75-42-FLUSH

PAGE 1 of 2

FLUSH MOUNTED INSTALLATION WITH MANUALLY COVERED ROLLING JACK LOWERING POCKET

THIS CONFIGURATION IS MOST OFTEN USED FOR FLEET MAINTENANCE APPLICATIONS THAT INVOLVE A MODERATE RATIO OF TIRE, WHEEL OR BRAKE SERVICES.

THE FRONT OF THE LIFT UNIT IS PLACED TO THE FRONT OF THE LIFT TRENCH. FOR THIS INSTALLATION, THE LIFT UNIT WILL TRANSLATE TO THE REAR AS IT ARTICULATES UPWARD. ALLOW APPROXIMATELY 60 INCHES AT THE REAR OF THE LIFT FOR THIS MOTION.

UNITS = INCHES (mm)

NOTICE OF CONFIDENTIAL INFORMATION
 THIS DRAWING IS THE PROPERTY OF MOHAWK RESOURCES LTD. IT IS TO BE USED ONLY FOR THE PROJECT AND SHALL NOT BE REPRODUCED, COPIED, OR TRANSMITTED IN ANY FORM OR BY ANY MEANS, ELECTRONIC OR MECHANICAL, INCLUDING PHOTOCOPYING, RECORDING, OR BY ANY INFORMATION STORAGE AND RETRIEVAL SYSTEM. WITHOUT THE WRITTEN PERMISSION OF MOHAWK RESOURCES LTD.

NOTES:
 1. REMOVE ALL SHARP CORNERS & EDGES.
 2. UNLESS OTHERWISE SPECIFIED, SURFACE FINISH TO BE US RMS.
 3. CONFORM TO AISC SPECIFICATIONS TO E-70XX ELECTRODES OR E-7011 CODE 5.3 FLUX CORE WIRE ONLY.

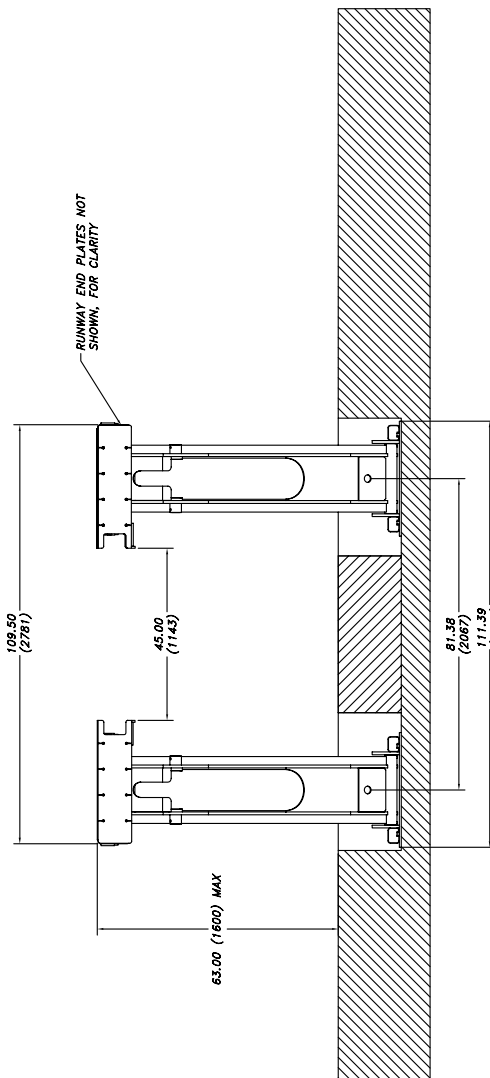
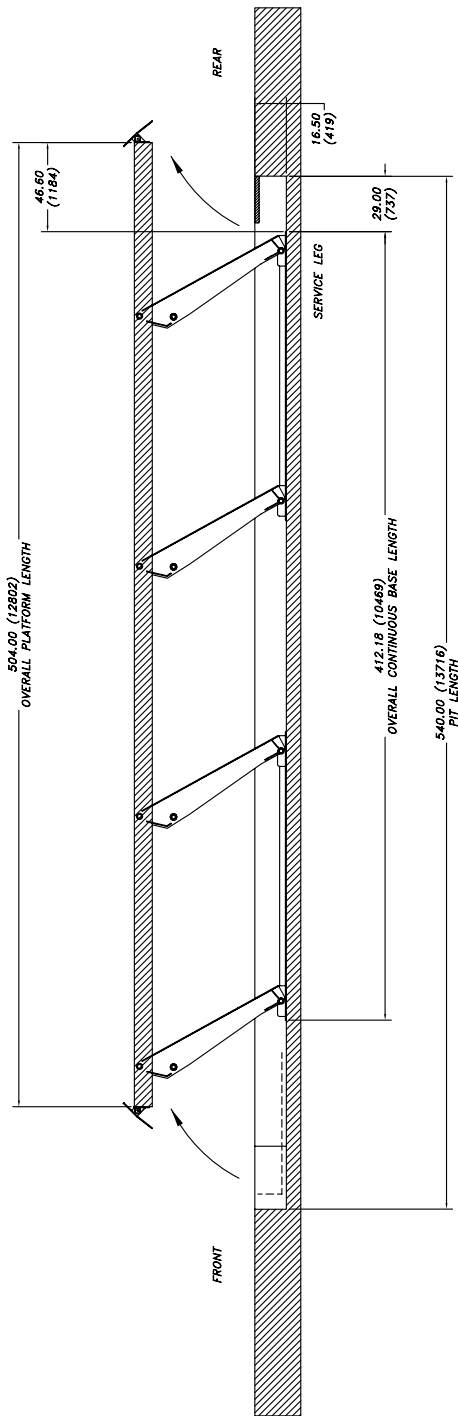
TELEPHONES: 1 800 393 0000
 FACSIMILE: 1 800 393 0000
 E-MAIL: sales@mohawk.com
 FILE NAME: P-3510-A-001

APPROVED: P-3510-
 DATE: 11/17/2008
 NEXT ASSEMBLY:

MOHAWK RESOURCES LTD.
 INSTALLATION REQUIREMENTS
 DRAWING: 75-42-FLUSH
 DRAWING NUMBER: P-3510-A-001

ITEM	NAME	DESCRIPTION	QTY	MATERIAL	VENDOR	NOTE	PRICE
6	P-1010-D-006	Flush Installation General Notes	1				0.000
5	P-010-D-005	Service Leg Conduit Details	1				0.000
4	P-010-D-004	Anchor Details & Shimming	1				0.000
3	P-010-D-003	Control Console & Stub-Up Details	1				0.000
2	P-3510-D-002	75-42-Flush Lift Data Table	1				0.000
1	P-3510-D-001	75-42-Flush, P/E Drawings & Sections	1				0.000

D-SIZE

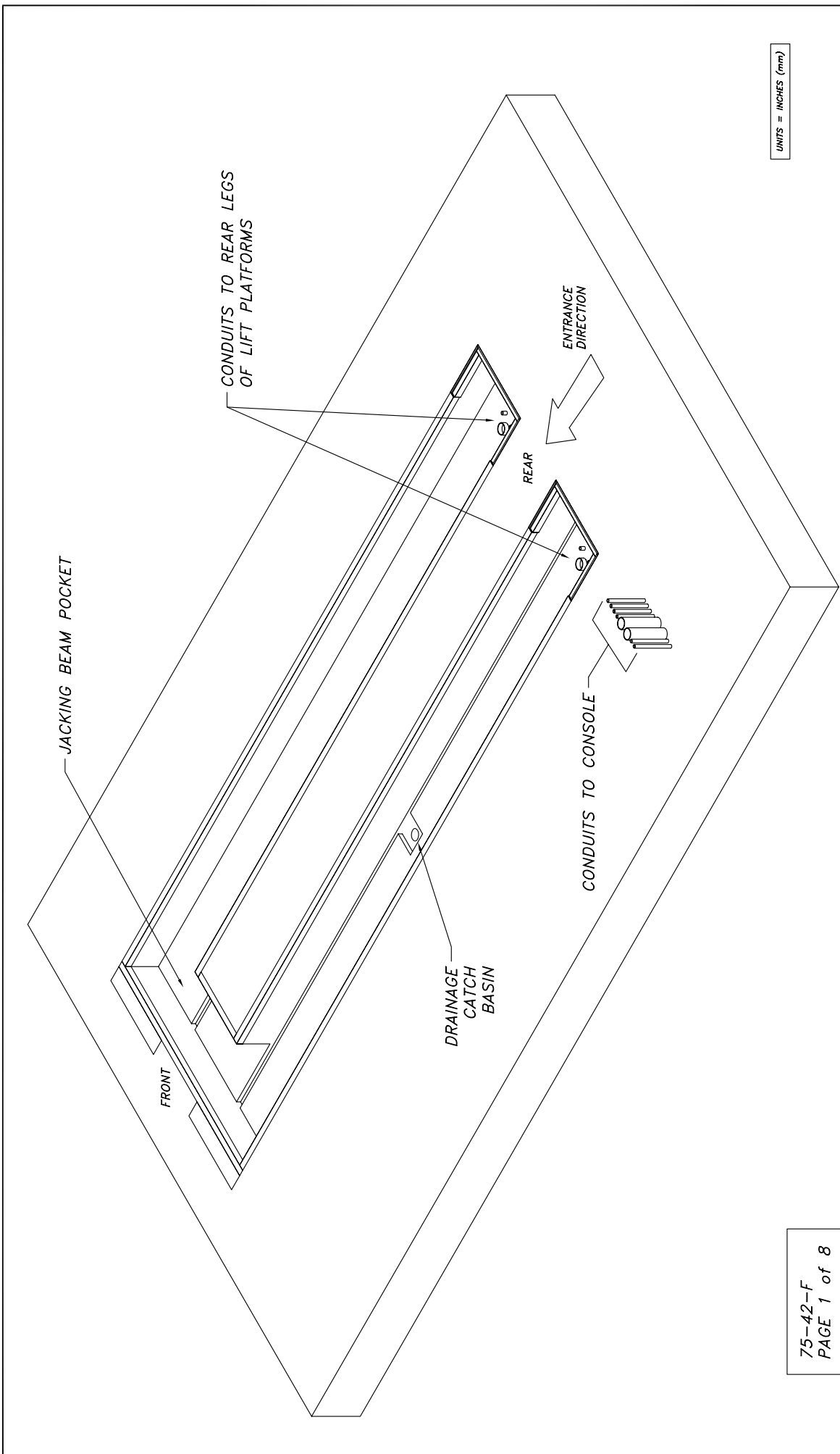


UNITS = INCHES (mm)

75-42-FLUSH

PAGE 2 of 2

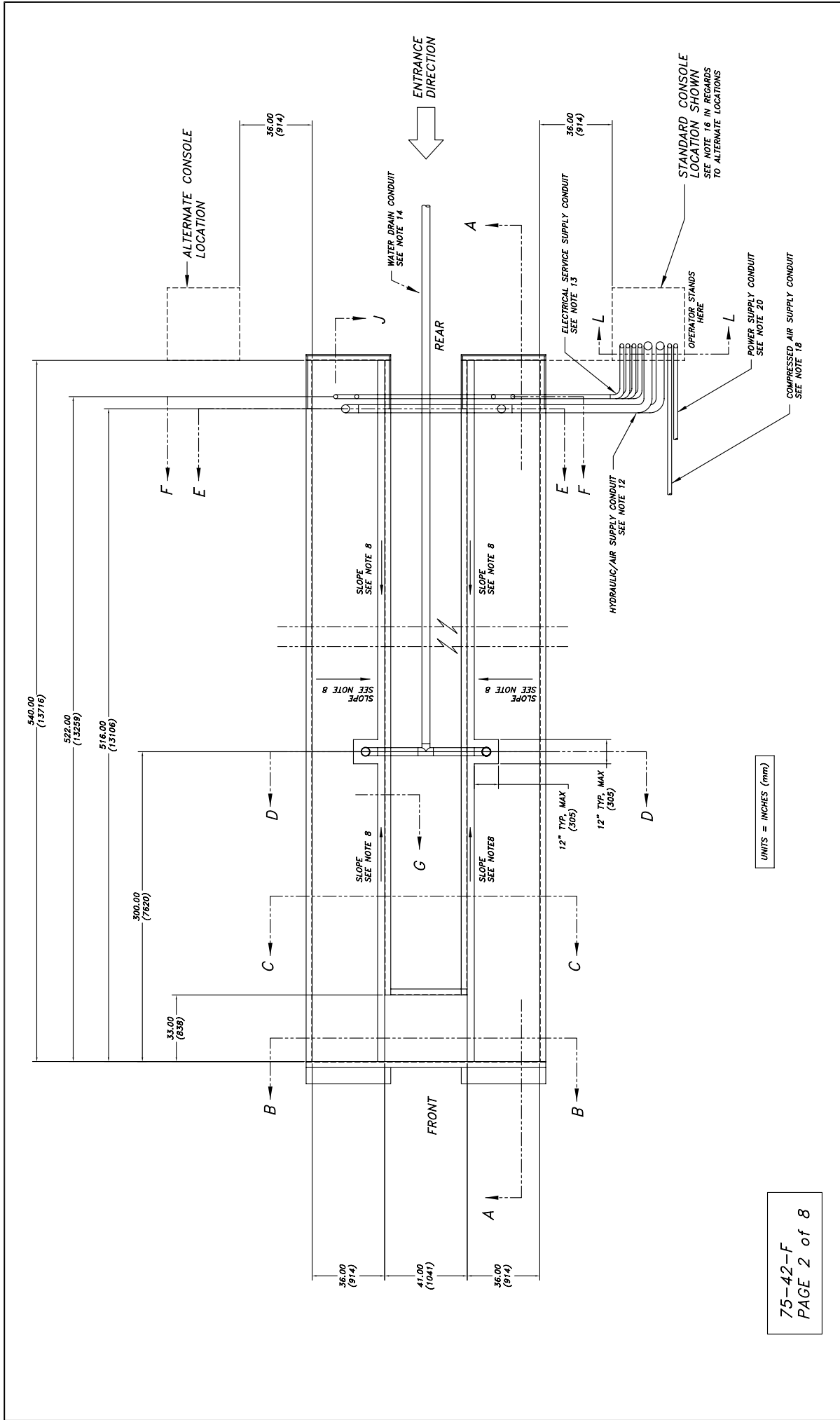
<p>NOTICE OF CONFIDENTIAL INFORMATION</p> <p>THIS DRAWING IS THE PROPERTY OF MOHAWK RESOURCES LTD. IT IS TO BE USED ONLY FOR THE PROJECT AND SHALL NOT BE REPRODUCED OR TRANSMITTED IN ANY FORM OR BY ANY MEANS, ELECTRONIC OR MECHANICAL, INCLUDING PHOTOCOPYING, RECORDING, OR BY ANY INFORMATION STORAGE AND RETRIEVAL SYSTEM, WITHOUT THE WRITTEN PERMISSION OF MOHAWK RESOURCES LTD.</p>		<p>FILES:</p> <p>1. REMOVE ALL SHARP CORNERS & EDGES.</p> <p>2. UNLESS OTHERWISE SPECIFIED, SURFACE FINISH TO BE 125 RMS.</p> <p>3. SPECIFICATIONS TO E-70XX ELECTRODES OR E-70T1 CODE S3 FLUX CORE WIRE ONLY.</p>	<p>TELEVISIONS</p> <p>ANGULAR ± 1°</p> <p>RECTILINEAR ± 0.030</p> <p>RECTILINEAR ± 0.030</p> <p>RECTILINEAR ± 0.030</p> <p>FILE NAME</p> <p>P-3510-A-001</p>	<p>P-3510-</p> <p>NEXT ASSEMBLY</p>	<p>SCALE</p> <p>1/32</p> <p>CHECKED</p> <p>DATE</p> <p>11/17/2008</p>	<p>DRAWN</p> <p>PMW2089</p> <p>APPROVED</p> <p>WEIGHT</p> <p>L.B.</p>	<p>MOHAWK RESOURCES LTD.</p> <p>INSTALLATION REQUIREMENTS</p> <p>DRAWING: 75-42-FLUSH</p> <p>FROM</p> <p>P-3510-A-001</p>
---	--	--	--	-------------------------------------	---	---	---



UNITS = INCHES (mm)

75-42-F
PAGE 1 of 8

NOTICE OF CONFIDENTIAL INFORMATION		MOHAWK RESOURCES LTD.	
<p>THIS DOCUMENT IS UNCLASSIFIED AND IS NOT TO BE RELEASED TO THE PUBLIC OR TO ANY OTHER PARTY WITHOUT THE WRITTEN AUTHORIZATION OF MOHAWK RESOURCES LTD. FOR THE REASON THAT IT CONTAINS INFORMATION THAT IS UNCLASSIFIED AND IS NOT TO BE RELEASED TO THE PUBLIC OR TO ANY OTHER PARTY WITHOUT THE WRITTEN AUTHORIZATION OF MOHAWK RESOURCES LTD.</p>		<p>TITLE: PIT DRAWING E SECTIONS FOR 75-42-F (LUSH)</p>	
<p>NOTES:</p> <ol style="list-style-type: none"> REMOVE ALL SHARP CORNERS & EDGES. UNLESS OTHERWISE SPECIFIED, SURFACE FINISH TO BE 125 RMS. CONFORM TO AISC SPECIFICATIONS TO E-70XX ELECTRODES OR E-70TT CODE 5.3 FLUX CORE WIRE ONLY. 		<p>DATE: 11/17/2006</p>	<p>DATE: 3/7/04</p>
<p>FILE NAME: P-3510-D-001</p>		<p>APPROVED: [Signature]</p>	<p>APPROVED: [Signature]</p>
<p>NEXT ASSEMBLY: P-3510-A-001</p>		<p>WEIGHT: [Blank]</p>	<p>WEIGHT: [Blank]</p>
<p>FILE NAME: P-3510-D-001</p>		<p>DATE: 11/17/2006</p>	<p>DATE: 3/7/04</p>
<p>FILE NAME: P-3510-D-001</p>		<p>DATE: 11/17/2006</p>	<p>DATE: 3/7/04</p>



UNITS = INCHES (mm)

75-42-F
PAGE 2 of 8

NOTICE OF CONFIDENTIAL INFORMATION
 THIS DRAWING IS THE PROPERTY OF MOHAWK RESOURCES LTD. IT IS TO BE USED ONLY FOR THE PROJECT AND SITE SPECIFICALLY IDENTIFIED HEREON. IT IS NOT TO BE REPRODUCED, COPIED, OR TRANSMITTED IN ANY FORM OR BY ANY MEANS, ELECTRONIC OR MECHANICAL, INCLUDING PHOTOCOPYING, RECORDING, OR BY ANY INFORMATION STORAGE AND RETRIEVAL SYSTEM, WITHOUT THE WRITTEN PERMISSION OF MOHAWK RESOURCES LTD. THE USER SHALL BE RESPONSIBLE FOR OBTAINING ALL NECESSARY PERMITS AND APPROVALS FOR THE PROJECT FOR ANY OTHER PURPOSES WHATSOEVER.

NOTES:
 1. REMOVE ALL SHARP CORNERS & EDGES
 2. UNLESS OTHERWISE SPECIFIED, SURFACE FINISH TO BE SSP RMS. CONFORM TO AISC SPECIFICATIONS TO E-70XX ELECTRODES OR E-7011 CODE 5.3 FLUX CORE WIRE ONLY.
 3. ALL DIMENSIONS SHALL BE TO CENTER UNLESS OTHERWISE SPECIFIED.

TEL. DIMENSIONS:
 ANGULAR ± 1.0
 LINEAR ± 0.30
 HOLE DIA ± 0.05
 HOLE DIA ± 0.05
 FILE NAME: P-3510-D-001

P-3510-A-001
 NEXT ASSEMBLY

SCALE: 3/16
 DATE: 11/17/2008
 CHECKED: []
 APPROVED: []
 DRAWN: Pmw7089

NO.	DATE	BY	DESCRIPTION
1	11/17/2008	Pmw7089	ISSUED FOR FABRICATION

NO.	DATE	BY	DESCRIPTION
1	11/17/2008	Pmw7089	ISSUED FOR FABRICATION

NO.	DATE	BY	DESCRIPTION
1	11/17/2008	Pmw7089	ISSUED FOR FABRICATION

NO.	DATE	BY	DESCRIPTION
1	11/17/2008	Pmw7089	ISSUED FOR FABRICATION

NO.	DATE	BY	DESCRIPTION
1	11/17/2008	Pmw7089	ISSUED FOR FABRICATION

NO.	DATE	BY	DESCRIPTION
1	11/17/2008	Pmw7089	ISSUED FOR FABRICATION

NO.	DATE	BY	DESCRIPTION
1	11/17/2008	Pmw7089	ISSUED FOR FABRICATION

NO.	DATE	BY	DESCRIPTION
1	11/17/2008	Pmw7089	ISSUED FOR FABRICATION

NO.	DATE	BY	DESCRIPTION
1	11/17/2008	Pmw7089	ISSUED FOR FABRICATION

NO.	DATE	BY	DESCRIPTION
1	11/17/2008	Pmw7089	ISSUED FOR FABRICATION

NO.	DATE	BY	DESCRIPTION
1	11/17/2008	Pmw7089	ISSUED FOR FABRICATION

NO.	DATE	BY	DESCRIPTION
1	11/17/2008	Pmw7089	ISSUED FOR FABRICATION

NO.	DATE	BY	DESCRIPTION
1	11/17/2008	Pmw7089	ISSUED FOR FABRICATION

NO.	DATE	BY	DESCRIPTION
1	11/17/2008	Pmw7089	ISSUED FOR FABRICATION

NO.	DATE	BY	DESCRIPTION
1	11/17/2008	Pmw7089	ISSUED FOR FABRICATION

NO.	DATE	BY	DESCRIPTION
1	11/17/2008	Pmw7089	ISSUED FOR FABRICATION

NO.	DATE	BY	DESCRIPTION
1	11/17/2008	Pmw7089	ISSUED FOR FABRICATION

NO.	DATE	BY	DESCRIPTION
1	11/17/2008	Pmw7089	ISSUED FOR FABRICATION

NO.	DATE	BY	DESCRIPTION
1	11/17/2008	Pmw7089	ISSUED FOR FABRICATION

NO.	DATE	BY	DESCRIPTION
1	11/17/2008	Pmw7089	ISSUED FOR FABRICATION

NO.	DATE	BY	DESCRIPTION
1	11/17/2008	Pmw7089	ISSUED FOR FABRICATION

NO.	DATE	BY	DESCRIPTION
1	11/17/2008	Pmw7089	ISSUED FOR FABRICATION

NO.	DATE	BY	DESCRIPTION
1	11/17/2008	Pmw7089	ISSUED FOR FABRICATION

NO.	DATE	BY	DESCRIPTION
1	11/17/2008	Pmw7089	ISSUED FOR FABRICATION

NO.	DATE	BY	DESCRIPTION
1	11/17/2008	Pmw7089	ISSUED FOR FABRICATION

NO.	DATE	BY	DESCRIPTION
1	11/17/2008	Pmw7089	ISSUED FOR FABRICATION

NO.	DATE	BY	DESCRIPTION
1	11/17/2008	Pmw7089	ISSUED FOR FABRICATION

NO.	DATE	BY	DESCRIPTION
1	11/17/2008	Pmw7089	ISSUED FOR FABRICATION

NO.	DATE	BY	DESCRIPTION
1	11/17/2008	Pmw7089	ISSUED FOR FABRICATION

NO.	DATE	BY	DESCRIPTION
1	11/17/2008	Pmw7089	ISSUED FOR FABRICATION

NO.	DATE	BY	DESCRIPTION
1	11/17/2008	Pmw7089	ISSUED FOR FABRICATION

NO.	DATE	BY	DESCRIPTION
1	11/17/2008	Pmw7089	ISSUED FOR FABRICATION

NO.	DATE	BY	DESCRIPTION
1	11/17/2008	Pmw7089	ISSUED FOR FABRICATION

NO.	DATE	BY	DESCRIPTION
1	11/17/2008	Pmw7089	ISSUED FOR FABRICATION

NO.	DATE	BY	DESCRIPTION
1	11/17/2008	Pmw7089	ISSUED FOR FABRICATION

NO.	DATE	BY	DESCRIPTION
1	11/17/2008	Pmw7089	ISSUED FOR FABRICATION

NO.	DATE	BY	DESCRIPTION
1	11/17/2008	Pmw7089	ISSUED FOR FABRICATION

NO.	DATE	BY	DESCRIPTION
1	11/17/2008	Pmw7089	ISSUED FOR FABRICATION

NO.	DATE	BY	DESCRIPTION
1	11/17/2008	Pmw7089	ISSUED FOR FABRICATION

NO.	DATE	BY	DESCRIPTION
1	11/17/2008	Pmw7089	ISSUED FOR FABRICATION

NO.	DATE	BY	DESCRIPTION
1	11/17/2008	Pmw7089	ISSUED FOR FABRICATION

NO.	DATE	BY	DESCRIPTION
1	11/17/2008	Pmw7089	ISSUED FOR FABRICATION

NO.	DATE	BY	DESCRIPTION
1	11/17/2008	Pmw7089	ISSUED FOR FABRICATION

NO.	DATE	BY	DESCRIPTION
1	11/17/2008	Pmw7089	ISSUED FOR FABRICATION

NO.	DATE	BY	DESCRIPTION
1	11/17/2008	Pmw7089	ISSUED FOR FABRICATION

NO.	DATE	BY	DESCRIPTION
1	11/17/2008	Pmw7089	ISSUED FOR FABRICATION

NO.	DATE	BY	DESCRIPTION
1	11/17/2008	Pmw7089	ISSUED FOR FABRICATION

NO.	DATE	BY	DESCRIPTION
1	11/17/2008	Pmw7089	ISSUED FOR FABRICATION

NO.	DATE	BY	DESCRIPTION
1	11/17/2008	Pmw7089	ISSUED FOR FABRICATION

NO.	DATE	BY	DESCRIPTION
1	11/17/2008	Pmw7089	ISSUED FOR FABRICATION

NO.	DATE	BY	DESCRIPTION
1	11/17/2008	Pmw7089	ISSUED FOR FABRICATION

NO.	DATE	BY	DESCRIPTION
1	11/17/2008	Pmw7089	ISSUED FOR FABRICATION

NO.	DATE	BY	DESCRIPTION
1	11/17/2008	Pmw7089	ISSUED FOR FABRICATION

NO.	DATE	BY	DESCRIPTION
1	11/17/2008	Pmw7089	ISSUED FOR FABRICATION

NO.	DATE	BY	DESCRIPTION
1	11/17/2008	Pmw7089	ISSUED FOR FABRICATION

NO.	DATE	BY	DESCRIPTION
1	11/17/2008	Pmw7089	ISSUED FOR FABRICATION

NO.	DATE	BY	DESCRIPTION
1	11/17/2008	Pmw7089	ISSUED FOR FABRICATION

NO.	DATE	BY	DESCRIPTION
1	11/17/2008	Pmw7089	ISSUED FOR FABRICATION

NO.	DATE	BY	DESCRIPTION
1	11/17/2008	Pmw7089	ISSUED FOR FABRICATION

NO.	DATE	BY	DESCRIPTION
1	11/17/2008	Pmw7089	ISSUED FOR FABRICATION

NO.	DATE	BY	DESCRIPTION
1	11/17/2008	Pmw7089	ISSUED FOR FABRICATION

NO.	DATE	BY	DESCRIPTION
1	11/17/2008	Pmw7089	ISSUED FOR FABRICATION

NO.	DATE	BY	DESCRIPTION
1	11/17/2008	Pmw7089	ISSUED FOR FABRICATION

NO.	DATE	BY	DESCRIPTION
1	11/17/2008	Pmw7089	ISSUED FOR FABRICATION

NO.	DATE	BY	DESCRIPTION
1	11/17/2008	Pmw7089	ISSUED FOR FABRICATION

NO.	DATE	BY	DESCRIPTION
1	11/17/2008	Pmw7089	ISSUED FOR FABRICATION

NO.	DATE	BY	DESCRIPTION
1	11/17/2008	Pmw7089	ISSUED FOR FABRICATION

NO.	DATE	BY	DESCRIPTION
1	11/17/2008	Pmw7089	ISSUED FOR FABRICATION

NO.	DATE	BY	DESCRIPTION
1	11/17/2008	Pmw7089	ISSUED FOR FABRICATION

NO.	DATE	BY	DESCRIPTION
1	11/17/2008	Pmw7089	ISSUED FOR FABRICATION

NO.	DATE	BY	DESCRIPTION
1	11/17/2008	Pmw7089	ISSUED FOR FABRICATION

NO.	DATE	BY	DESCRIPTION
1	11/17/2008	Pmw7089	ISSUED FOR FABRICATION

NO.	DATE	BY	DESCRIPTION
1	11/17/2008	Pmw7089	ISSUED FOR FABRICATION

NO.	DATE	BY	DESCRIPTION
1	11/17/2008	Pmw7089	ISSUED FOR FABRICATION

NO.	DATE	BY	DESCRIPTION
1	11/17/2008	Pmw7089	ISSUED FOR FABRICATION

NO.	DATE	BY	DESCRIPTION
1	11/17/2008	Pmw7089	ISSUED FOR FABRICATION

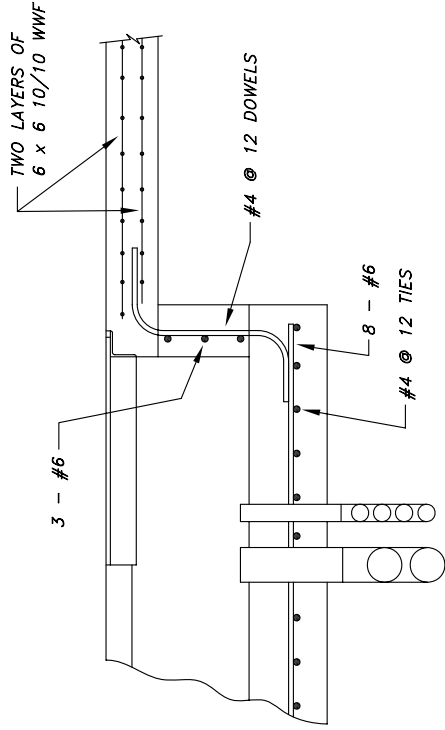
NO.	DATE	BY	DESCRIPTION
1	11/17/2008	Pmw7089	ISSUED FOR FABRICATION

NO.	DATE	BY	DESCRIPTION
1	11/17/2008	Pmw7089	ISSUED FOR FABRICATION

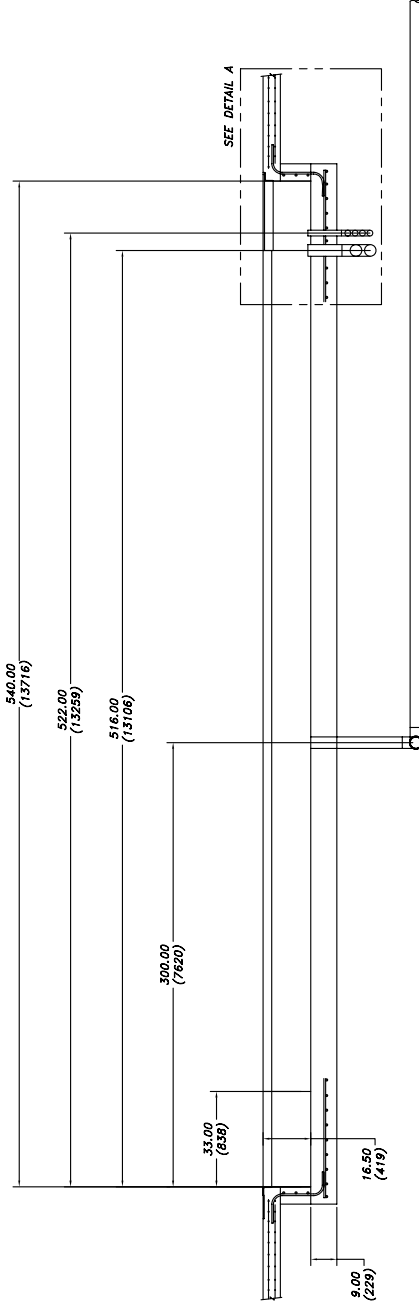
NO.	DATE	BY	DESCRIPTION
1	11/17/2008	Pmw7089	ISSUED FOR FABRICATION

NO.	DATE	BY	DESCRIPTION
1	11/17/2008	Pmw7089	ISSUED FOR FABRICATION

NO.	DATE	BY	DESCRIPTION
1	11/17/2008	Pmw7089	ISSUED FOR FABRICATION



DETAIL A



SECTION A-A

UNITS = INCHES (mm)

75-42-F
PAGE 3 of 8

NOTICE OF CONFIDENTIAL INFORMATION
 MOHAWK RESOURCES LTD. IS A COMPANY OF THE PROVINCE OF ONTARIO, CANADA. THE INFORMATION CONTAINED HEREIN IS UNCLASSIFIED AND IS NOT BE RELEASED OR DISCLOSED TO THE PUBLIC BY THE RECIPIENT FOR ANY OTHER PURPOSES WHATSOEVER.

NOTES:
 1. REMOVE ALL SHARP CORNERS & EDGES.
 2. UNLESS OTHERWISE SPECIFIED, SURFACE FINISH TO BE 125 RAAS. CONFORM TO AAS SPECIFICATIONS TO E-70XX ELECTRODES OR E-70T1 CODE S3 FLUX CORE WIRE ONLY.
 3. SPECIFICATIONS TO E-70XX ELECTRODES OR E-70T1 CODE S3 FLUX CORE WIRE ONLY.

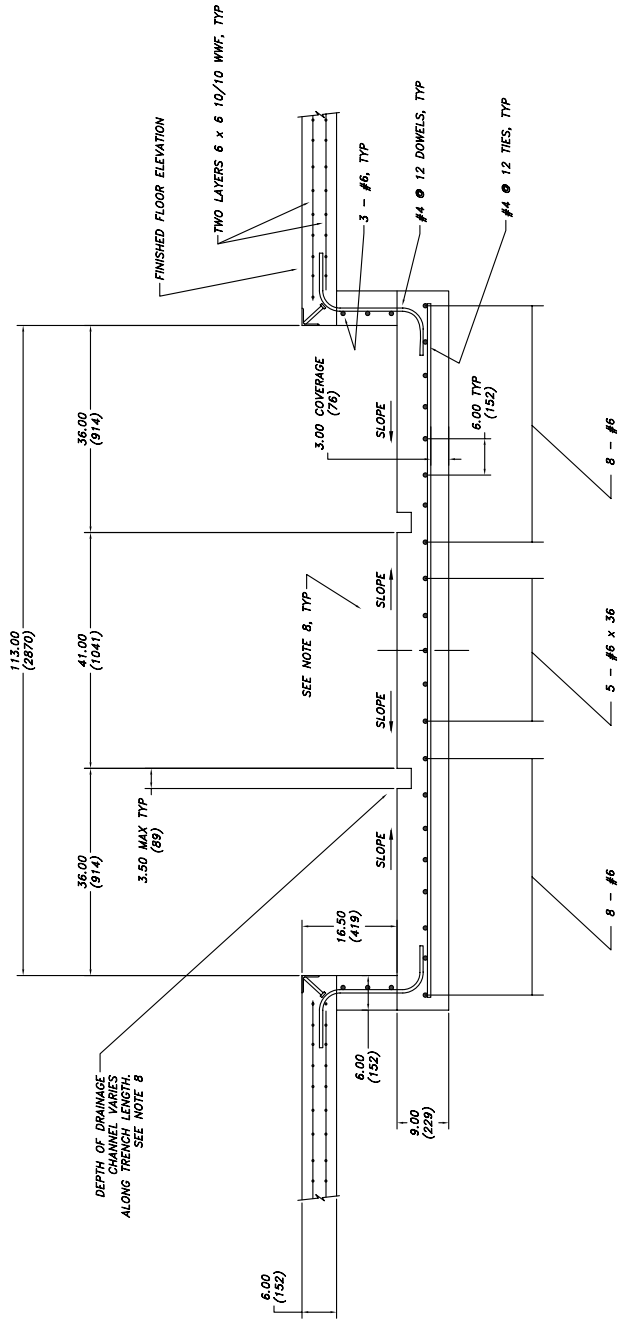
TOLERANCES:
 ANGULAR ± 1.0
 LINEAR ± .030
 DECIMAL ± .005
 DIA ± .005
 HOLE ± .005
 FILE NAME
 P-3510-D-001

P-3510-A-001
 NEXT ASSEMBLY

SCALE 3/64
 CHECKED
 DATE 11/17/2006

TRAVN #W7089
 APPROVED
 WEIGHT LB.

MOHAWK RESOURCES LTD.
 TITLE PIT DRAWINGS & SECTIONS FOR 75-42-F (FLUSH)
 FROM

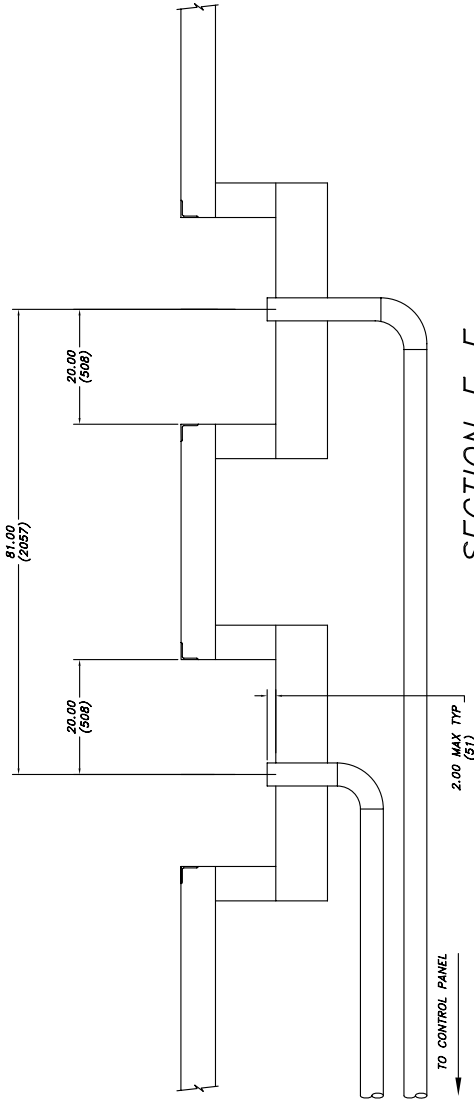


UNITS = INCHES (mm)

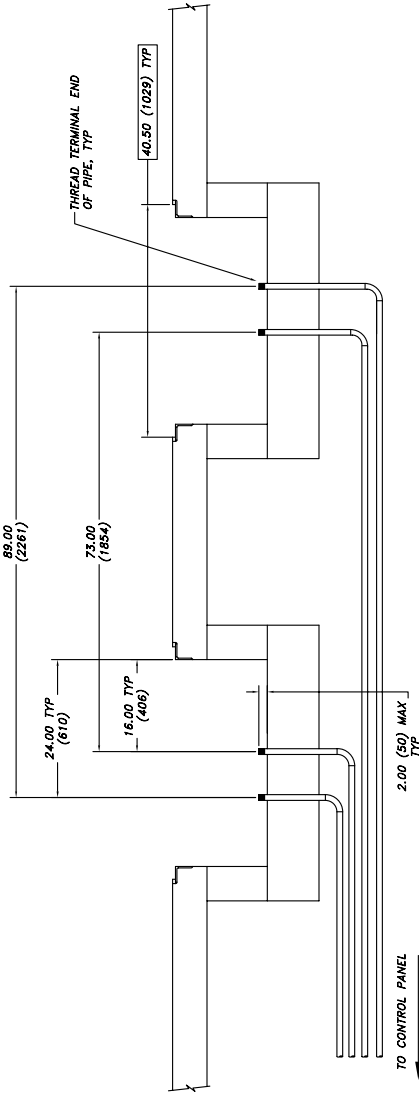
SECTION B-B

75-42-F
PAGE 4 of 8

DRAWN: RW7089		SCALE: 3/32		P-3510-A-001		TOLERANCES: ANGULAR ± 1.0° LINEAR ± 0.030 DECIMAL ± 0.005		NOTES: 1. REMOVE ALL SHARP CORNERS & EDGES. 2. UNLESS OTHERWISE SPECIFIED, SURFACE FINISH SHALL CONFORM TO AAS SPECIFICATIONS TO E-70XX ELECTRODES OR E-7011 COBE S3 FLUX CORE WIRE D11.1.		MOHAWK RESOURCES LTD. TITLE: PIT DRAWINGS & SECTIONS FOR 75-42-F (FLUSH)	
CHECKED:	APPROVED:	CHECKED:	DATE: 11/17/2006	WEIGHT:	FRM:	FILE NAME: P-3510-D-001	DRAWING NUMBER: P-3510-D-001		DRAWING NUMBER: P-3510-D-001		
NEXT ASSEMBLY:		NEXT ASSEMBLY:		NEXT ASSEMBLY:		NEXT ASSEMBLY:		NEXT ASSEMBLY:		NEXT ASSEMBLY:	



SECTION E-E

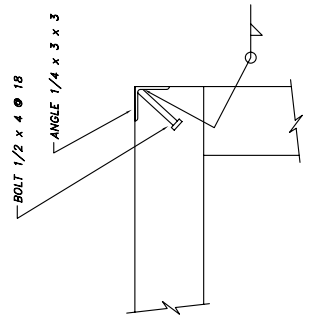


SECTION F-F

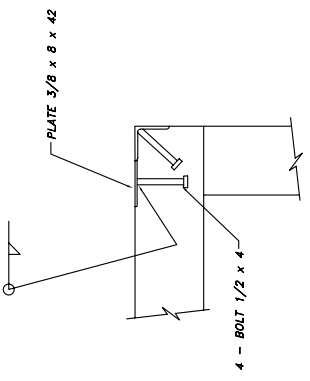
UNITS = INCHES (mm)

75-42-F
PAGE 6 of 8

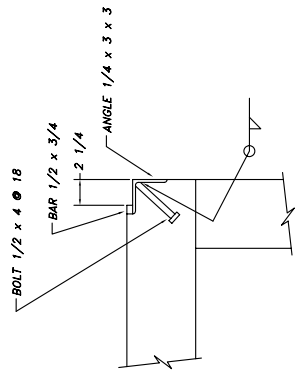
NOTICE OF CONFIDENTIAL INFORMATION INFORMATION CONTAINED HEREIN IS CONFIDENTIAL AND PROPRIETARY. IT IS TO BE USED ONLY FOR THE PROJECT AND IS NOT TO BE DISCLOSED TO OTHERS. IF YOU ARE NOT AN AUTHORIZED USER, YOU ARE NOT TO REPRODUCE OR TRANSMIT THIS INFORMATION IN ANY FORM OR BY ANY MEANS, ELECTRONIC OR MECHANICAL, INCLUDING PHOTOCOPYING, RECORDING, OR BY ANY INFORMATION STORAGE AND RETRIEVAL SYSTEM. THE INFORMATION SHALL NOT BE USED FOR ANY OTHER PURPOSES WITHOUT THE WRITTEN PERMISSION OF MOHAWK RESOURCES LTD.		TOLERANCES: ANGULAR ± 1° DIMENSIONAL ± .030 DECIMAL ± .005 HOLE ± .005 TYP	P-3510-A-001 NEXT ASSEMBLY	DRAWN: rw7089 APPROVED:	MOHAWK RESOURCES LTD. TITLE: PIT DRAWINGS & SECTIONS FOR 75-42-F (TUSH) FROM:
SCALE: 3/32 CHECKED:	DATE: 11/11/2008	WEIGHT:	L.B.:	CHECKED:	FROM:
FILE NAME: P-3510-D-001	DATE:	WEIGHT:	L.B.:	CHECKED:	FROM:



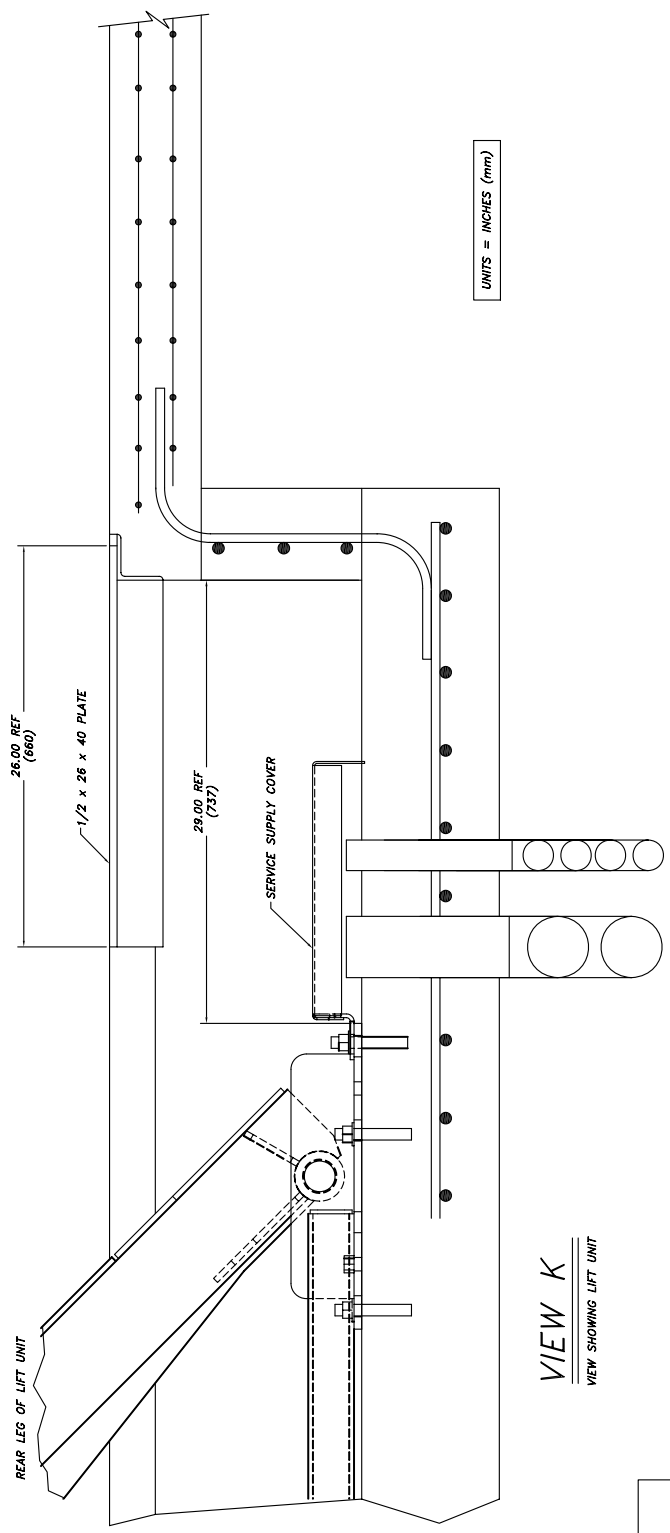
SECTION G



SECTION H



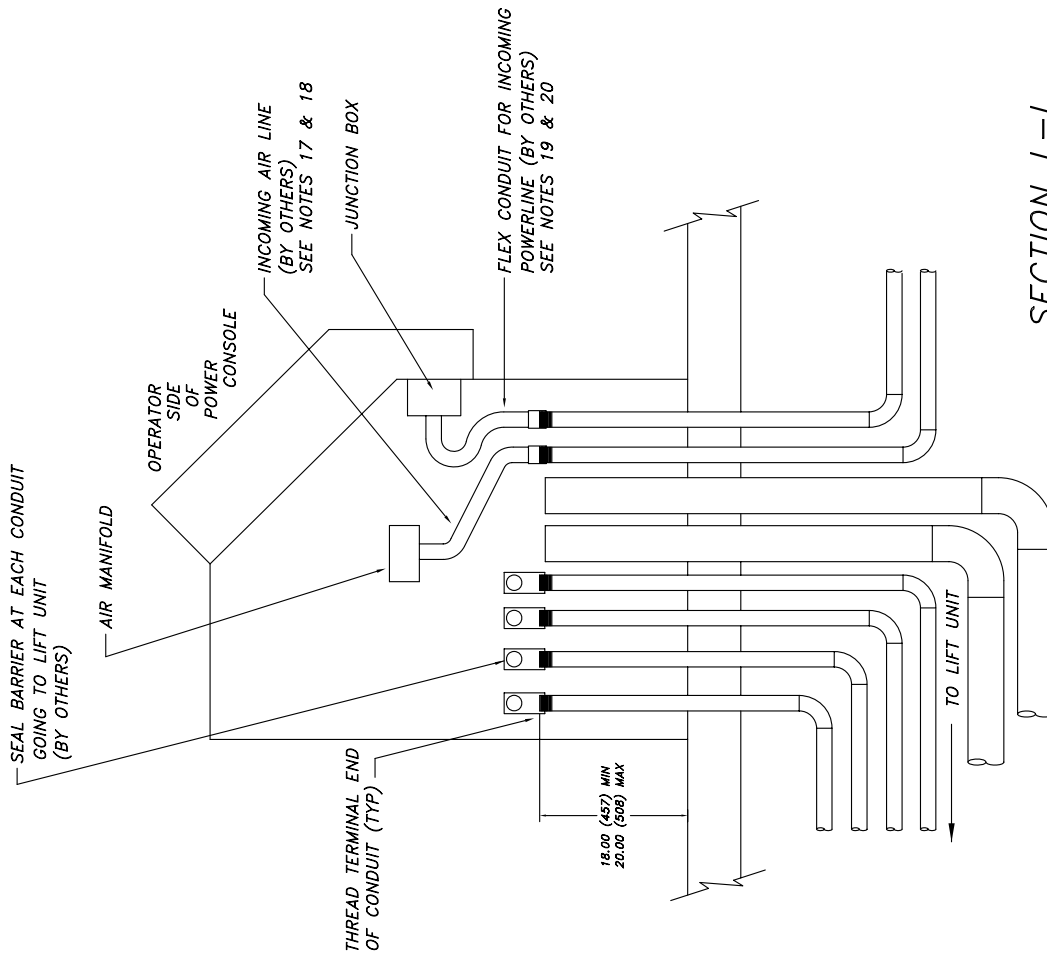
SECTION J



VIEW K
VIEW SHOWING LIFT UNIT

75-42-F
PAGE 7 of 8

NOTICE OF CONFIDENTIAL INFORMATION		NOTES:		TOLERANCES:		SCALE		DRAWN		MOHAWK RESOURCES LTD.			
ALL INFORMATION CONTAINED HEREIN IS CONFIDENTIAL AND PROPERTY OF MOHAWK RESOURCES LTD. THESE DRAWINGS ARE LOANED TO OTHERS ON THE UNDERSTANDING THAT THE INFORMATION SHALL NOT BE USED, REPRODUCED OR TRANSMITTED IN ANY FORM OR BY ANY MEANS, ELECTRONIC OR MECHANICAL, INCLUDING PHOTOCOPYING, RECORDING, OR BY ANY INFORMATION STORAGE AND RETRIEVAL SYSTEM, WITHOUT THE WRITTEN PERMISSION OF MOHAWK RESOURCES LTD.		1. REMOVE ALL SHARP CORNERS & EDGES. 2. UNLESS OTHERWISE SPECIFIED, SURFACE FINISH SHALL BE 320. 3. WELDING SHALL CONFORM TO AWS SPECIFICATIONS TO E-70XX ELECTRODES OR E-70T1 CODE S3 FLUX CORE WIRE ONLY.		LINEAR: ± .005 ANGULAR: ± .030 HOLE DIA: ± .005		3/32		P-3510-4-001		P-3510-4-001		TITLE	
						CHECKED		APPROVED		PIT. DRAWINGS & SECTIONS FOR 75-42-F (LUSH)		DRAWING NUMBER	
						DATE		WEIGHT		FROM		DRAWING NUMBER	
						11/17/2006		P-3510-D-001		P-3510-D-001		P-3510-D-001	
						NEXT ASSEMBLY		L.B.		R/G		DRAWING NUMBER	
												P-3510-D-001	



UNITS = INCHES (mm)

SECTION L-L

75-42-F
PAGE 8 of 8

<p>NOTICE OF CONFIDENTIAL INFORMATION</p> <p>Information contained herein is confidential and property of Mohawk Resources Ltd. It is to be used only for the purposes of the contract. It shall be kept secret and confidential and shall not be disclosed to any other person without the written consent of Mohawk Resources Ltd.</p>		<p>NOTES:</p> <ol style="list-style-type: none"> 1. REMOVE ALL SHARP CORNERS & EDGES. 2. UNLESS OTHERWISE SPECIFIED, SURFACE FINISH TO BE 125 RMS. CONFORM TO AS SPECIFICATIONS TO E-701X ELECTRODES OR E-701T COBE S.3 FLUX COBE WIRE ONLY. 		<p>TOLERANCES:</p> <p>FINISH ± 0.00</p> <p>GENERAL ± 0.05</p> <p>UNLESS OTHERWISE SPECIFIED</p> <p>FILE NAME: P-3510-D-001</p>		<p>P-3510-A-001</p> <p>NEXT ASSEMBLY:</p>		<p>SCALE: 3/8"</p> <p>CHECKED:</p> <p>DATE: 11/17/2008</p>		<p>DRAWN: 7/17/2008</p> <p>APPROVED:</p> <p>WEIGHT: LB.</p>		<p>MOHAWK RESOURCES LTD.</p> <p>717 DUNDAS ST. W. SUITE 200</p> <p>TORONTO, ONT. M5G 1L5 CANADA</p>	
										<p>FORM: P-3510-D-001</p> <p>REVISED: 11/17/2008</p>			

LIFT DATA TABLE

MOHAWK RESOURCES, LTD
PARALLELOGRAM LIFT MODEL
75-42-FLUSH

LIFT UNIT DATA	
MAXIMUM LOAD CAPACITY (LBS)	75,000
ANCHORAGE	---
ANCHOR BOLT DIAMETER (IN.)	3/4"
TOTAL NUMBER OF ANCHOR BOLTS	80
BOLT PATTERN	SEE ANCHOR DETAILS
ANCHOR BOLT SETTING TORQUE	N/A - SEE ANCHOR DETAILS
MINIMUM EMBEDMENT LENGTH (IN.)	3.00
MINIMUM CONCRETE THICKNESS (IN.)	---
HYDRAULIC	30 TOTAL
RESERVOIR CAPACITY (GAL)	DEXRON III (ATF)
OIL TYPE	---
ELECTRICAL	20
MOTOR HORSEPOWER	60 AMPERE
208/230 V 3 PH	30 AMPERE
or 460 V 3 PH	7.69 AMP
CONTROL CIRCUIT TRANSFORMER 1000 VA	4.8 AMP
24 VDC POWER SUPPLY	8
LIGHT FIXTURES (OPTIONAL LIGHTING KIT)	---
SHOP AIR	85 to 100
AIR PRESSURE (PSI)	5
AIR VOLUME - LIFT (CFM)(LOCKS)	25 EACH
AIR VOLUME - OPTIONAL ROLLING JACK (CFM)	20
AIR VOLUME - OPTIONAL SHOP AIR KIT (CFM)	30 MINIMUM
AIR VOLUME - TOTAL REQ'D CAPACITY (CFM)	50 SUGGESTED
AIR VOLUME - TOTAL REQ'D CAPACITY (CFM)	

REQUIRED MATERIAL LIST

MATERIALS SHOWN ON THIS LIST SHALL BE USED WITHOUT
SUBSTITUTION UNLESS SPECIFICALLY APPROVED IN WRITING BY
MOHAWK RESOURCES, LTD.

12	1	LOCKOUT/TAGOUT DISCONNECT BOX	PER LOCAL ELECTRICAL CODES
11*	AR	LEVELING SHIMS	1/16" 1/8" 1/4" THICK
10*	56	3/4" x 5" ANCHOR BOLT ASSEMBLY	WE-IT - WEDGE ANCHORS
9	4	1" SEAL BARRIER	CROUSE - HINDS EYS3
8	4	1"-3/4" REDUCER BUSHING	CROUSE - HINDS RE32
7	4	1" SCH 40-90 DEG ELBOW	CROUSE - HINDS EL3
6*	1	JUNCTION BOX (IN CONSOLE)	STEEL
5	AR	SEALTITE FLEXIBLE CONDUIT	METAL CORE
4	AR	1" RIGID CONDUIT	STEEL
3	1	FILTER/LUBRICATOR/REGULATOR, DRYER SHUTOFF	
2	AR	4" SCH 40 STREET ELBOW	STEEL or PVC
1	AR	4" SCH 40 PIPE	STEEL or PVC
ITEM	QTY	DESCRIPTION	MATERIAL
		* ITEMS SUPPLIED BY MOHAWK WITH THE LIFT UNIT	

NOTICE OF CONFIDENTIAL INFORMATION
INFORMATION CONTAINED HEREIN IS CONFIDENTIAL AND PROPERTY OF MOHAWK RESOURCES, LTD. IT SHALL BE USED ONLY FOR THE PURPOSES OF THE CONTRACT AND NOT BE DISCLOSED OR REPRODUCED IN ANY MANNER WITHOUT THE WRITTEN PERMISSION OF MOHAWK RESOURCES, LTD.

NOTES:
1. MAKE ALL SHARP CORNERS & EDGES RADIUS.
2. FINISH TO BE SPS RMS.
3. WELDING MEDIUM SHALL CONFORM TO AWS D11.1.
4. WELDING SHALL BE PERFORMED BY A WELDER QUALIFIED TO WELD TO E-2011 CODE S3 PLUG CODE VISE DIM.

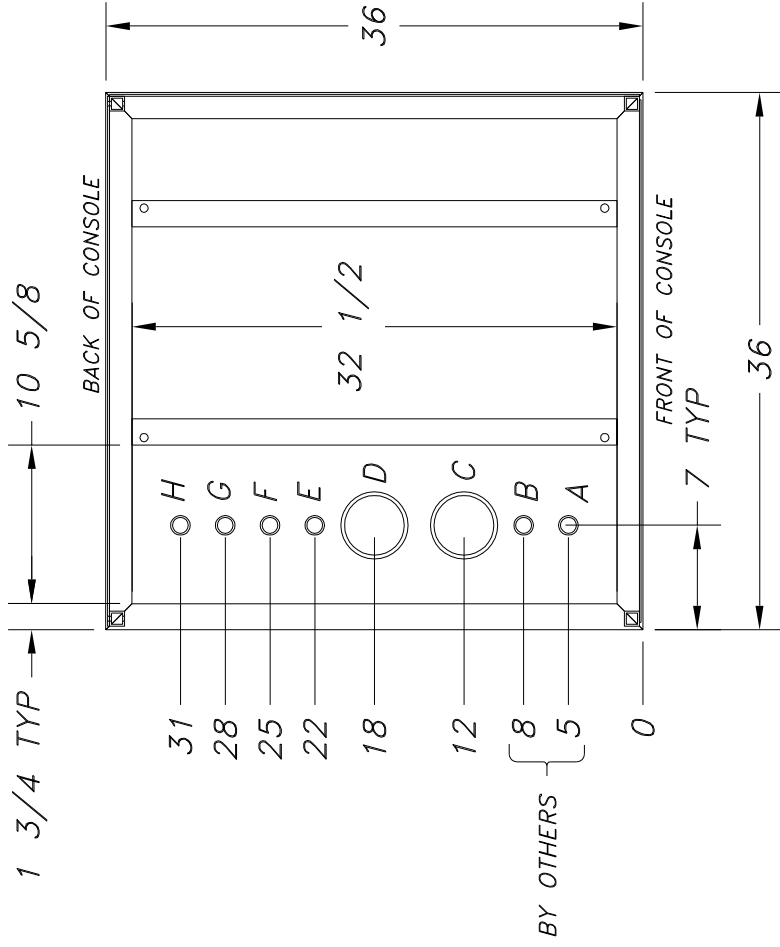
TOLERANCES
DIMENSIONS
± .030
HOLE DIA
± .005
FILE NAME
P-3510-D-002

SCALE
CHECKED
DATE
11/17/2008

DRAWN
PMW2089
APPROVED
WEIGHT
LB

MOHAWK RESOURCES LTD.
TITLE
75-42-F (FLUSH)
LIFT DATA - TABLE
DRAWING NUMBER
P-3510-D-002

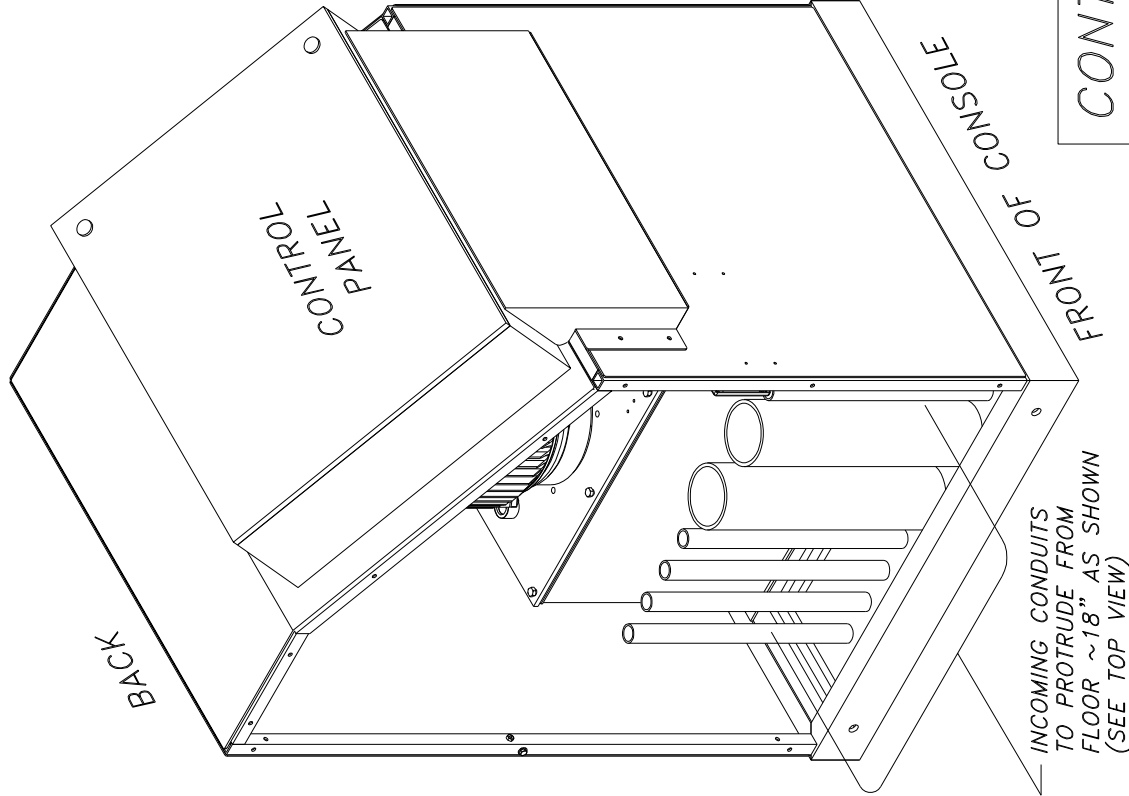
TOP VIEW OF CONSOLE FRAME



CONDUIT SIZES & APPLICATION:

- A: 1" (MIN) SCHED 40 STEEL PIPE - INCOMING POWER
 - B: 1" (MIN) SCHED 40 STEEL PIPE - INCOMING AIRLINE
 - C,D: 4" SCHED 40 PVC PIPE - HYDRAULIC & AIR TO LIFT
 - E,F,G,H: 1" (MIN) SCHED 40 STEEL PIPE - ELECTRICAL TO LIFT
- CUSTOMER PREFERENCE OPTIONAL

* NOTE: USE SMOOTH ELECTRICAL 90'S IN CONDUITS, NOT PLUMBING 90'S !!



NOTICE OF CONFIDENTIAL INFORMATION

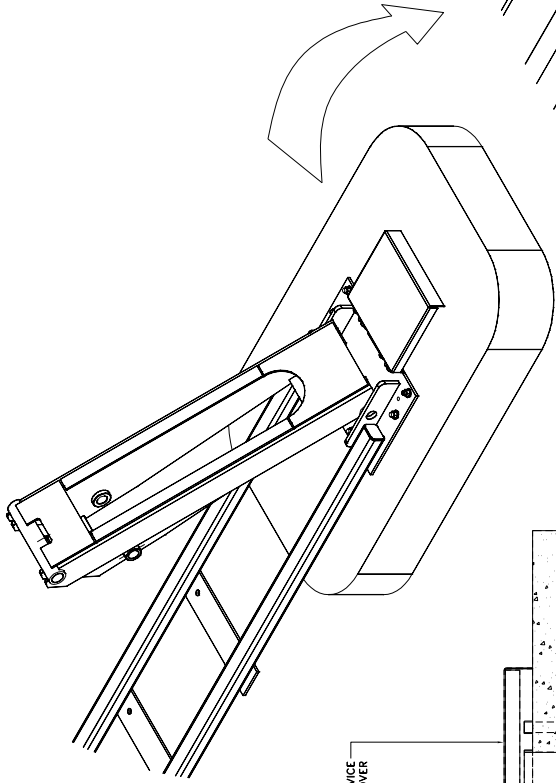
ALL INFORMATION CONTAINED HEREIN IS CONFIDENTIAL AND PROPERTY OF MOHAWK RESOURCES LTD. THESE DRAWINGS ARE TO BE USED ONLY FOR THE PROJECT AND NOT TO BE REPRODUCED, COPIED, OR DISCLOSED TO ANY OTHER PARTY WITHOUT THE WRITTEN APPROVAL OF MOHAWK RESOURCES LTD.

- NOTES:
1. REMOVE ALL SHARP CORNERS & EDGES.
 2. UNLESS OTHERWISE SPECIFIED, SURFACE FINISH SHALL BE AS SHOWN.
 3. WELDING METIUM SHALL CONFORM TO AWS SPECIFICATIONS TO E-70XX ELECTRODES OR E-70XX CORE 55 FLUX CORE WIRE ONLY.

TOLERANCES:	
FINISH:	1, 1.5
SECTIONAL:	1, 1.5
DRILL:	1, 1.5
FILE NAME:	P-010-D-003
FILE NUMBER:	P-010-D-003

SCALE:	
CHECKED:	
DATE:	4/03
WEIGHT:	LB
APPROVED:	
FROM:	

MOHAWK RESOURCES LTD.	
TITLE:	CONTROL CONSOLE & STUB-UP DETAILS
DATE:	4/03
WEIGHT:	LB
APPROVED:	
FROM:	
DRAWING NUMBER:	P-010-D-003

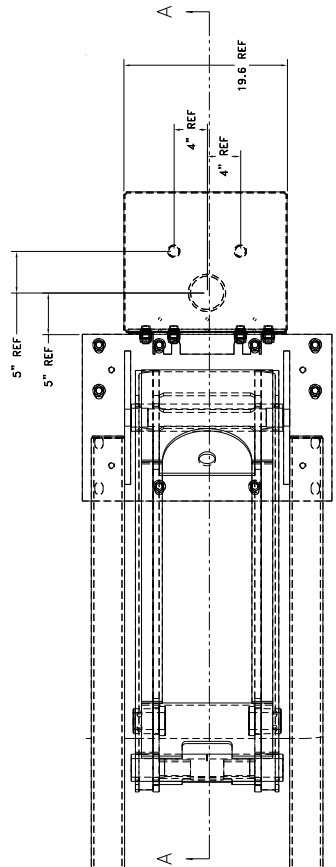


REAR LEG OF LIFT UNIT

FLOOR SERVICE SUPPLY COVER

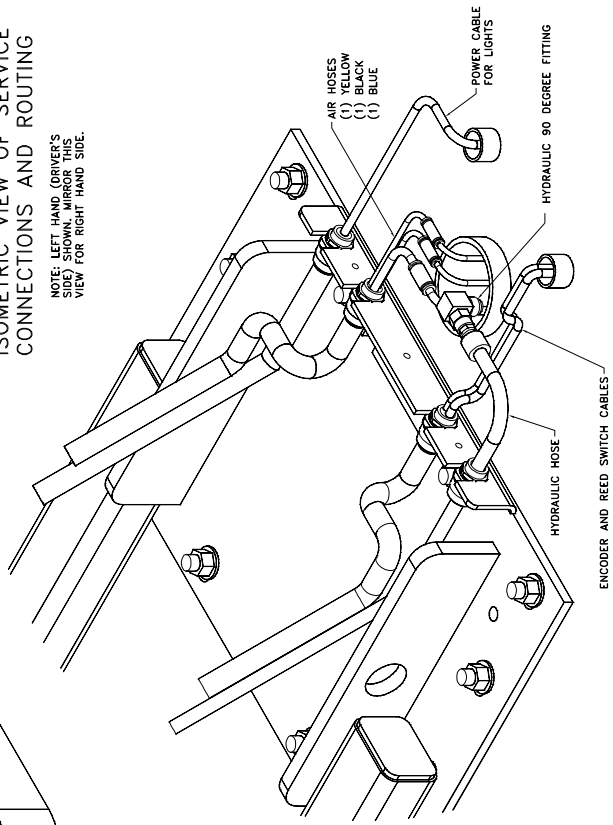
ANCHOR BOLT ASSEMBLY

SECTION A-A



ISOMETRIC VIEW OF SERVICE CONNECTIONS AND ROUTING

NOTE: LEFT HAND DRIVER'S VIEW FOR RIGHT HAND SIDE.



ENCODER AND REED SWITCH CABLES

NOTICE OF CONFIDENTIAL INFORMATION
 INFORMATION CONTAINED HEREIN IS CONFIDENTIAL AND PROPERTY OF MOHAWK RESOURCES LTD. THIS INFORMATION IS TO BE USED ONLY FOR THE PURPOSES SPECIFIED IN THE CONTRACT AND IS NOT TO BE DISCLOSED OR REPRODUCED IN ANY MANNER WITHOUT THE WRITTEN PERMISSION OF MOHAWK RESOURCES LTD.

NOTES:
 1. REMOVE ALL SHARP CORNERS & EDGES.
 2. FINISH ALL SURFACES AS SPECIFIED. SURFACE FINISH TO BE PERM. GRK.
 3. WELDING MEDIA SHALL CONFORM TO AWS SPECIFICATIONS TO E-70XX ELECTRODES OR E-70XX CODE 33 FLOW CAB. WIRE ONLY.

TOLEANCES:
 ANGULAR ± 1.0
 DIMENSIONAL ± .010
 ELECTRICAL ± .015
 SURFACE ± .015
 FILE NAME: P-010-D-005

P-010-A-001
 NEXT ASSEMBLY

SCALE: 1/8
 CHECKED: r/g
 DATE: 4/15/03

DRAWN: PM7089
 APPROVED: r/g
 WEIGHT: r/g
 LE: r/g
 DRAWING NUMBER: P-010-D-005

MOHAWK RESOURCES LTD.
 TITLE: Parallelogram Installation Service Leg Conduit Details

D-SIZE

GENERAL NOTES

NOTE 1
CONCRETE USED FOR THE BASE AND THE SIDE WALLS OF EACH TRENCH AND ANY OTHER NEW CONCRETE WHICH IS USED FOR THIS INSTALLATION MAY HAVE A MINIMUM STRENGTH OF $F'c=2,500$ psi. A STRENGTH OF $F'c=4,000$ psi IS RECOMMENDED WHERE POSSIBLE.

NOTE 2
CONCRETE USED FOR THE BASE AND SIDEWALLS OF THE TRENCH AREAS SHALL REACH ITS FULL 28 DAY $F'c$ STRENGTH BEFORE THE LIFT AND THE ANCHOR BOLTS ARE INSTALLED.

NOTE 3
CONCRETE REINFORCEMENT SIZES AND REINFORCEMENT SPECIFICATION FOR THE BASE OF EACH TRENCH SHALL BE DETERMINED BY AN ENGINEER OR ARCHITECT (AT THE EXPENSE OF THE PURCHASER) AND SHOULD BE DETERMINED CONSIDERING THE LOCAL SOIL CONDITIONS AND THE APPLIED LOADING. AS A MINIMUM, GRADE 60 REINFORCEMENT OF THE SIZE AND SPACING SHOWN ON THE DRAWINGS SHALL BE USED.

NOTE 4
CONCRETE REINFORCEMENT SPECIFICATIONS FOR THE FLOOR AREA AROUND THE TRENCHES SHALL BE DETERMINED BY AN ENGINEER OR ARCHITECT (AT THE EXPENSE OF THE PURCHASER) AND SHOULD BE DETERMINED CONSIDERING THE LOCAL SOIL CONDITIONS AND THE APPLIED LOADING. AS A MINIMUM, TWO LAYERS OF GRADE 60, 6X6-10/10 WELDED WIRE FABRIC SHOULD BE USED IN THE VICINITY OF THE LIFT UNIT AND BETWEEN THE TRENCHES.

NOTE 5
THE REINFORCING STEEL USED IN THE BASE OF THE TRENCHES SHALL BE INSTALLED SO AS TO NOT INTERFERE WITH THE ANCHOR BOLTS USED TO ATTACH THE LIFT UNIT.

NOTE 6
WELT-IT FASTENING SYSTEMS, AT WEDGE ANCHORS ARE PROVIDED WITH THE LIFT FOR ANCHORING THE LIFT UNIT TO THE FLOOR SYSTEM. THE NUMBER AND THE SIZE OF ANCHOR BOLTS SPECIFIED IN THE DRAWING MUST BE USED TO ATTACH THE LIFT UNIT. ANCHOR BOLTS OF FULL LENGTH MUST BE USED IN ALL LOCATIONS PROVIDED ON THE BASE OF THE LIFT UNIT.

NOTE 7
CARE MUST BE TAKEN TO ENSURE THAT THE SIDE WALLS OF THE TRENCH ARE PARALLEL AND STRAIGHT. APPROXIMATELY 1 1/2 OF CLEARANCE IS PROVIDED ALONG THE SIDES OF THE RUNWAYS.

NOTE 8
SLOPE THE BOTTOM OF THE TRENCH 1/16 INCH PER FOOT TOWARD THE DRAINAGE CHANNEL. SLOPE THE DRAINAGE CHANNEL 1/16 INCH PER FOOT TOWARD THE CATCH BASIN.

NOTE 9
CARE MUST BE TAKEN TO ENSURE THAT THE BASE OF THE TRENCH AREAS ARE AT THE PROPER ELEVATION. A MAXIMUM OF ONE INCH ADJUSTMENT (SHIMMING) IS PERMITTED FOR INSTALLATION LEVELING.

NOTE 10
WHERE MORE THAN 3/4 INCH OF SHIM LEVELING IS REQUIRED, FULL SUPPORT PLATE CONTACT SHIMS ARE AVAILABLE AT ADDITIONAL COST. THE FULL CONTACT SHIM PLATES SHALL THEN BE ACCURATELY LEVELLED USING INDIVIDUAL ANCHOR BOLT SHIMS. INDIVIDUAL ANCHOR BOLT SHIMS ARE AVAILABLE IN A RANGE OF THICKNESSES FROM 1/16 INCH TO 1/4 INCH.

NOTE 11
NO EMBEDDED PLUMBING, TUBES, CONDUITS OR OTHER ITEMS, EXCEPT THE LIFT UNIT SERVICE LEG CONDUITS SHALL BE CLOSER THAN 16 INCHES FROM ANY ANCHOR BOLT. ALSO, THE SERVICE LEG CONDUITS SHALL BE INSTALLED ACCURATELY IN THE LOCATIONS SHOWN IN THE PLAN AND DETAIL VIEWS TO MINIMIZE THE EFFECT ON THE ANCHORAGE.

NOTE 12
PROVIDE TWO, 4 INCH SCH 40 PVC PIPE AS A HYDRAULIC-PNEUMATIC SERVICE SUPPLY CONDUIT RUNNING FROM THE POWER UNIT TO EACH SERVICE LEG.

NOTE 13
PROVIDE 4, 1 INCH SCH 40 STEEL CONDUITS AS ELECTRICAL SERVICE SUPPLY RUNNING FROM THE POWER UNIT TO THE SERVICE LEGS. THESE CONDUITS SHALL BE INSTALLED AS SHOWN ON THE SECTION VIEWS AND MUST BE INSTALLED ACCORDING TO APPLICABLE ELECTRICAL CODES.

NOTE 14
ONE 4 INCH SCH 40 PVC DRAIN PIPE SHOULD BE PROVIDED TO CARRY DRAINAGE FROM THE CATCH BASINS TO AN OIL-WATER SEPARATOR. THIS PIPE SHOULD SLOPE A MINIMUM OF 1/16 INCH PER FOOT TOWARD THE DESTINATION.

NOTE 15
PROVIDE TEMPORARY CAPS FOR ALL CONDUITS AND EMBEDDED PIPES. IT IS RECOMMENDED TO LEAVE PULL ROPES IN CONDUITS FOR EASE OF LIFT INSTALLATION.

NOTE 16
THE CONTROL CONSOLE MUST BE LOCATED IN THE VICINITY OF THE LIFT. IT SHOULD BE PLACED FAR ENOUGH AWAY FROM THE LIFT TO ALLOW FOR ACTIVITIES AROUND THE LIFT. THE ENCLOSED DRAWINGS SHOW THE CONSOLE IN A STANDARD POSITION. THE CONTROL CONSOLE MAY BE LOCATED ON EITHER SIDE AND ANYWHERE ALONG THE LENGTH OF THE LIFT, BUT ANY DEVIATIONS FROM THE ENCLOSED DRAWINGS MAY REQUIRE LONGER CABLES, HOSES, CONDUIT, ETC. AT ADDITIONAL EXPENSE TO THE PURCHASER.

NOTE 17
THE LIFT UNIT REQUIRES CLEAN DRY COMPRESSED AIR AT THE PRESSURE AND VOLUME SHOWN ON THE LIFT UNIT DATA TABLE. A FILTER/LUBRICATOR/REGULATOR IS SUPPLIED WITH THE LIFT UNIT FOR THE LOCKING SYSTEM ONLY. A FILTER/LUBRICATOR/REGULATOR, AIR DRYER AND SHUTOFF VALVE MUST BE PROVIDED FOR THE LIFT UNIT TO OPERATE THE OPTIONAL ACCESSORIES. THE REQUIRED VOLUME OF AIR SHOWN IN THE LIFT UNIT DATA TABLE RECOGNIZES THAT NOT MORE THAN ONE AUXILIARY AIR CONSUMER WILL BE USED SIMULTANEOUSLY.

NOTE 18
PROVIDE ONE, 1 INCH SCH 40 RIGID STEEL CONDUIT AS A COMPRESSED AIR SUPPLY. THIS CONDUIT IS SHOWN UNDERGROUND, ALTERNATIVELY IT MAY BE BROUGHT TO THE CONTROL PANEL OVERHEAD DEPENDING ON CUSTOMER PREFERENCE. IF BROUGHT OVERHEAD, PROVIDE FLEX CONDUIT CONNECTING THE TERMINAL END OF THE CONDUIT TO THE CONTROL CONSOLE.

NOTE 19
THE LIFT UNIT REQUIRES A HIGH VOLTAGE POWER SOURCE. A LOCKOUT/TAGOUT ELECTRICAL DISCONNECT BOX MUST BE PROVIDED FOR THE POWER SOURCE. THE LOCKOUT/TAGOUT DISCONNECT BOX MUST BE INSTALLED ACCORDING TO APPLICABLE ELECTRICAL CODES. THIS ELECTRICAL DISCONNECT IS TO BE PROVIDED BY OTHERS.

NOTE 20
PROVIDE ONE, 1 INCH SCH 40 RIGID STEEL CONDUIT AS ELECTRICAL SERVICE SUPPLY RUNNING FROM THE BUILDING POWER SOURCE TO THE CONTROL CONSOLE. THIS CONDUIT IS SHOWN UNDERGROUND. ALTERNATIVELY IT MAY BE BROUGHT TO THE CONTROL PANEL OVERHEAD DEPENDING ON CUSTOMER PREFERENCE. PROVIDE A LOCKOUT/TAGOUT ELECTRICAL DISCONNECT BOX WITHIN SIGHT AND AS CLOSE TO THE CONTROL CONSOLE AS IS PRACTICAL. THIS ELECTRICAL SUPPLY CONDUIT AND DISCONNECT BOX MUST BE INSTALLED ACCORDING TO LOCAL ELECTRICAL CODE REQUIREMENTS.

NOTE 21
ALL FLOOR REQUIREMENTS ARE BASED ON A CONCRETE SLAB THAT IS ON GRADE (SUPPORTED BY SOIL). ANY OTHER TYPE OF INSTALLATION INVOLVING A SLAB NOT ON GRADE (I.E. SLAB SUPPORTED BY PYLONS, SECOND STORY SLAB, ETC.) MUST BE REVIEWED & ANALYZED FOR SUITABILITY BY THE BUILDING ARCHITECT, AT THE EXPENSE OF OTHERS.

FLUSH LIFTS ONLY

NOTICE OF CONFIDENTIAL INFORMATION
THIS DOCUMENT CONTAINS INFORMATION THAT IS UNCLASSIFIED BUT WHICH IS EXEMPT FROM PUBLIC RELEASE UNDER EXECUTIVE ORDER 13526, WHICH IS APPLIED TO THIS DOCUMENT BY THE INFORMATION SECURITY OFFICE OF THE NATIONAL ARCHITECTURAL AND ENGINEERING BOARD OF THE NATIONAL ARCHITECTURAL AND ENGINEERING BOARD. THE INFORMATION CONTAINED HEREIN IS UNCLASSIFIED EXCEPT WHERE SHOWN OTHERWISE. THE INFORMATION CONTAINED HEREIN IS UNCLASSIFIED EXCEPT WHERE SHOWN OTHERWISE. THE INFORMATION CONTAINED HEREIN IS UNCLASSIFIED EXCEPT WHERE SHOWN OTHERWISE.

NOTES	TOLERANCES	SCALE	DRAWING	MOHAWK RESOURCES LTD.
1. UNLESS OTHERWISE SPECIFIED, SURFACE FINISH TO BE PER RMC COMPANY TO AUSE SPECIFICATIONS TO E-70X ELECTRICALS OR E-701 CODE 5.3 FLUX CORE WIRE ONLY.	± 1/32 ± 1/64 ± 1/32 ± 1/64	CHECKED	APPROVED	TITLE
	FILE NAME	DATE	WEIGHT	GENERAL NOTES
	P-010-0-012	5/03	FROM	
			LIB	
				DRAWING NUMBER
				P-010-0-012